

*Opening
2006*



PSMC CO., LTD.
Poly Services Management & Consultants

A Profile

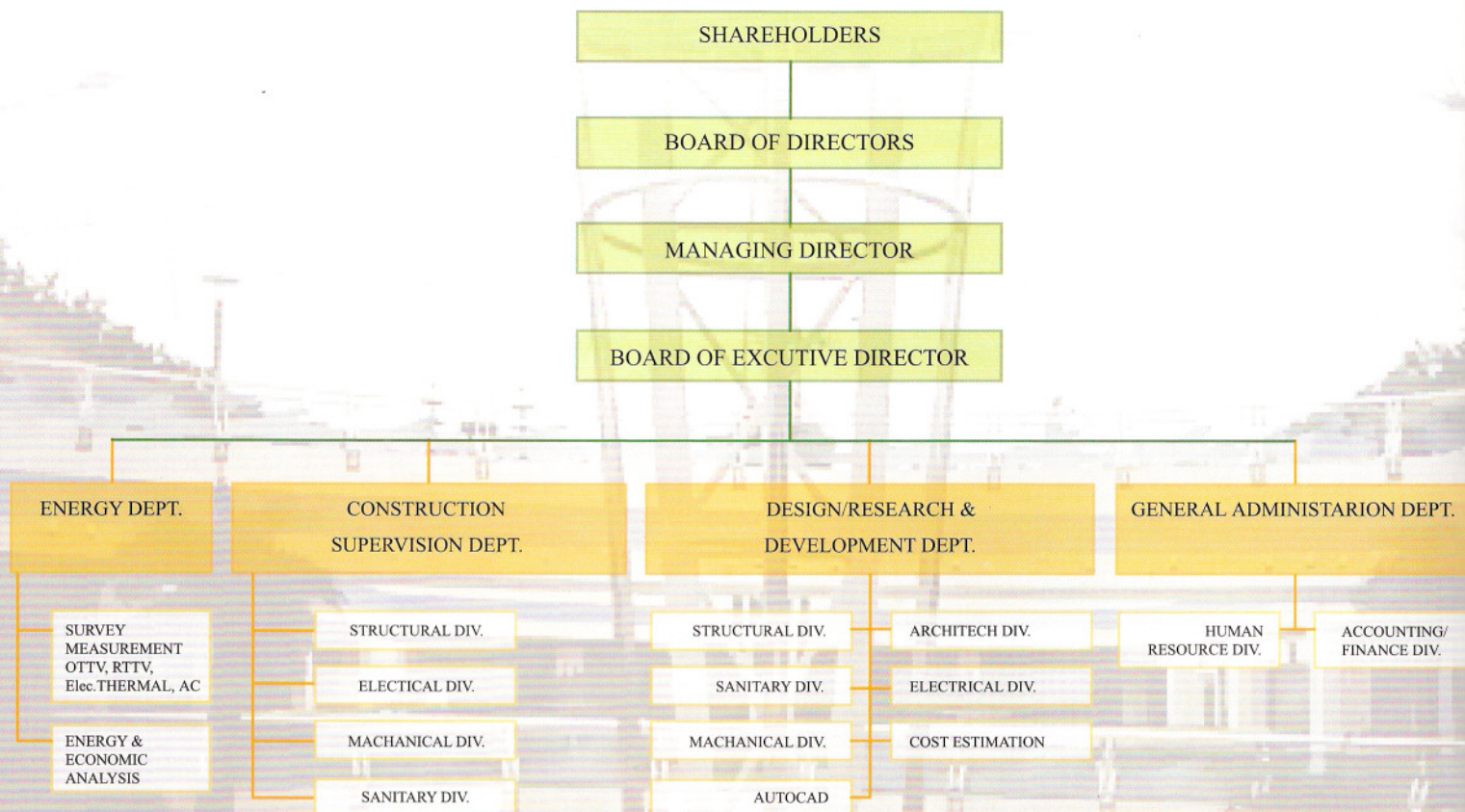
PSMC Company Limited (PSMC) is a Thai-based architectural, engineering, environmental and management consulting firm of professionals serving governmental, private sector and international organizations/ agencies. It is a professional consultants.

PSMC incorporates a number of specialized associate firms. It works under a primary commitment, that is, to render satisfactory multi-disciplinary services to its clients.

The company has continued to accumulate its professional expertise and extended services to cover various areas of engineering and architectural consultancies to cope with the rapid development in several sectors of the country. PSMC believes that successful project is an outcome of careful assessment and full understanding of the situation, problems and prospects in the particular locality.

PSMC's policy has focused on Best quality of works and client's satisfaction since the company's establishment. Realizing the essence of Quality Management System in improving the company's work.

Management Structure

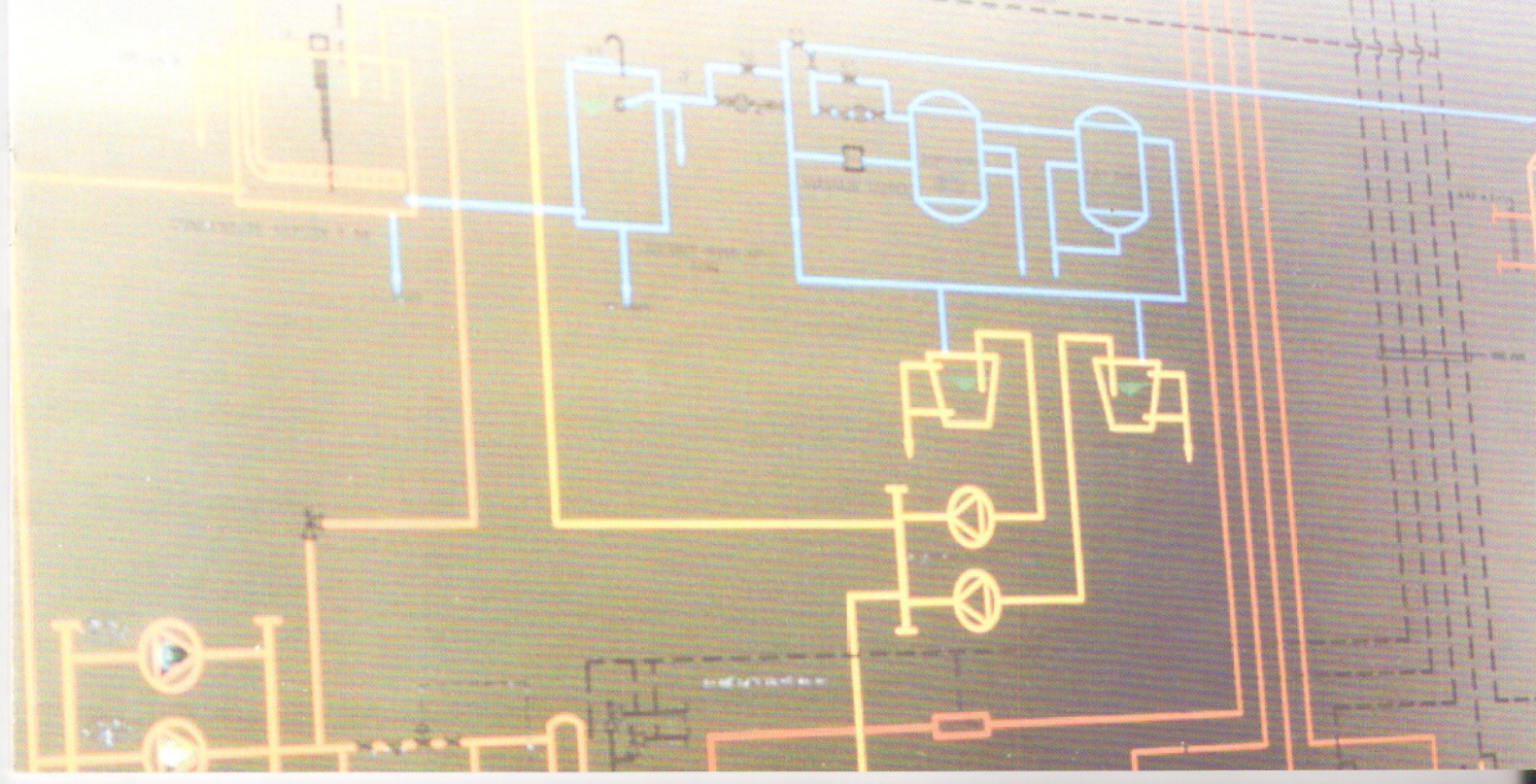


Field of Activities

- ▶ Preliminary Investigation
- ▶ Environmental Impact Assessment and Studies
- ▶ Feasibility Studies
- ▶ Master Planning/Landscaping
- ▶ Preliminary and Detailed Design
- ▶ Cost Estimation and Contract Document Preparation
- ▶ Quality Survey
- ▶ Construction Supervision and Management
- ▶ Automation Controlling
- ▶ Information Technology
- ▶ Engineering Training

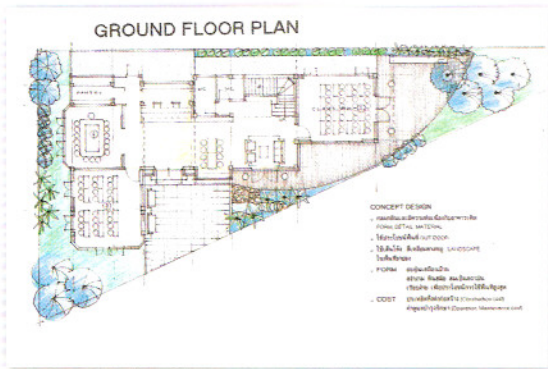
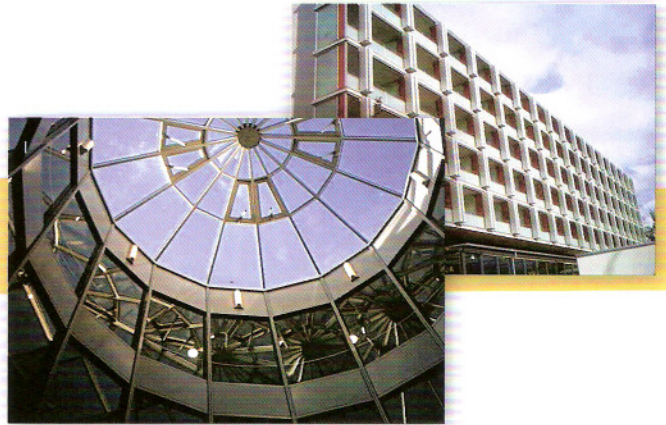
Scope of Services

- ▶ Architectural
- ▶ Civil/Structural Engineering
- ▶ Economic and Development Planning
- ▶ Environmental Study/ Environmental Engineering
- ▶ Industrial Enterprise Development
- ▶ Management Information System (MIS)
- ▶ Mechanical & Electrical Engineering/ Sanitary Engineering
- ▶ Energy Conservation
- ▶ Plant Piping Engineering
- ▶ Transportation Engineering
- ▶ Water Resources Studies/Engineering
- ▶ Information Technology
- ▶ The Others



Architectural

- ▶ Architectural Design
- ▶ Master Plan
- ▶ Landscape Design
- ▶ Site and Building Renovation
- ▶ Landuse planning for Large Project/
Industrial Estate

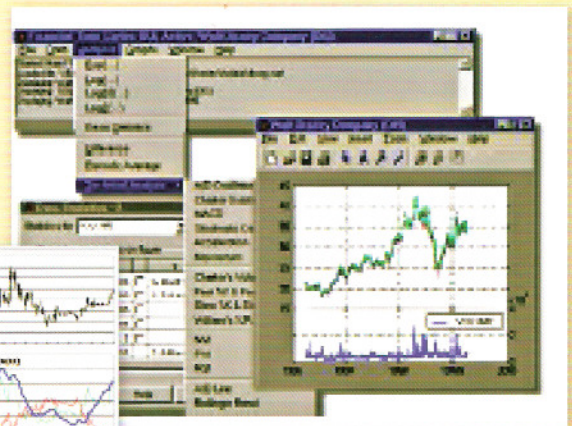


Civil/Structural Engineering

- ▶ Geotechnical Survey/
Engineering
- ▶ Structural Engineering
- ▶ Construction Supervision
- ▶ Construction Management

Economic and Development Planning

- ▶ Feasibility Study
- ▶ Financial Analysis
- ▶ Economics Study
- ▶ Socio-economic Study
- ▶ Marketing Survey/Studies



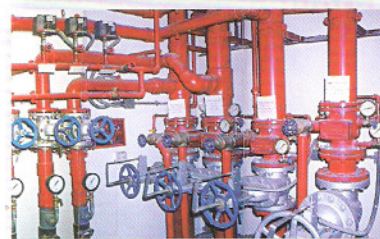
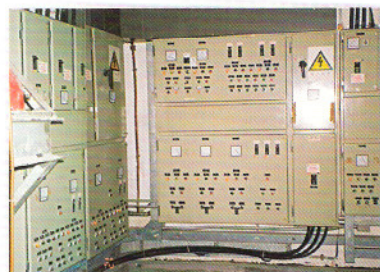
Environmental Engineering & Environmental Impact Assessment



- ▶ Water Supply Engineering
- ▶ Wastewater Engineering
- ▶ Solid Waste
- ▶ Study/Design
- ▶ Air Pollution Study/Control
- ▶ Environmental Impact
- ▶ Study/Evaluation
- ▶ Socio-economic Study
- ▶ Public Health Study
- ▶ Public Participation

Mechanical & Electrical Engineering / Sanitary Engineering

- ▶ Air-conditioning and Ventilation System
- ▶ Electrical/Power System
- ▶ Plumbing/Sanitary System
- ▶ Boiler System
- ▶ System Renovation
- ▶ Telecommunication System

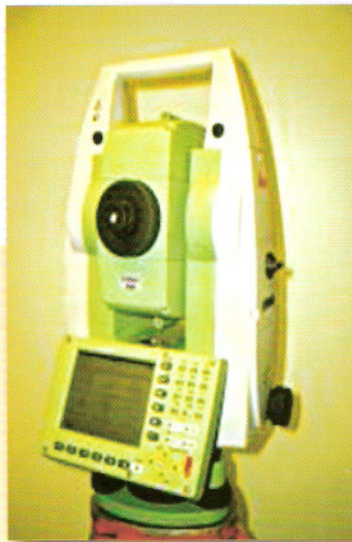


Energy Audit

- ▶ Energy Conservation
- ▶ Renewable Energy
- ▶ Energy Efficiency Conversation

Plant Piping Engineering

- ▶ Piping Design
- ▶ Piping/Plan Layout
- ▶ Piping Arrangement/Isometric Drafting
- ▶ Piping Stress Analysis
- ▶ Flow Analysis
- ▶ Instrumentation and Control



Survey Engineering

- ▶ Geodetic Survey
- ▶ Cadastral Survey
- ▶ Route Survey
- ▶ Horizontal & Vertical Controls for Aerial Photographs
- ▶ Hydrographic Survey
- ▶ Photogrammetry

Transportation Engineering

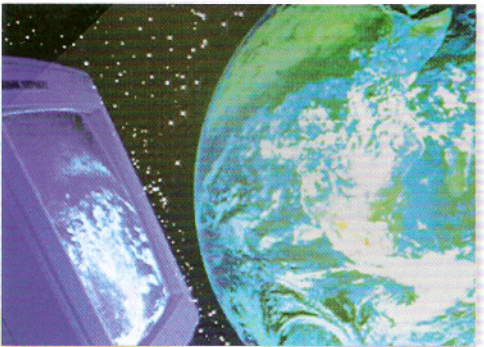
- ▶ Transportation Planning
- ▶ Traffic Studies/ Management
- ▶ Highway Engineering
- ▶ Harbour and Airport Design
- ▶ Bridge and Interchange Design



Water Resource Studies/Engineering



- ▶ Hydrological Studies
- ▶ Flood Control
- ▶ Pumping Station Study/Design
- ▶ Basin System Analysis
- ▶ Irrigation Engineering
- ▶ Dam and Appurtenance Structures Designs
- ▶ Reservoir Development Planning

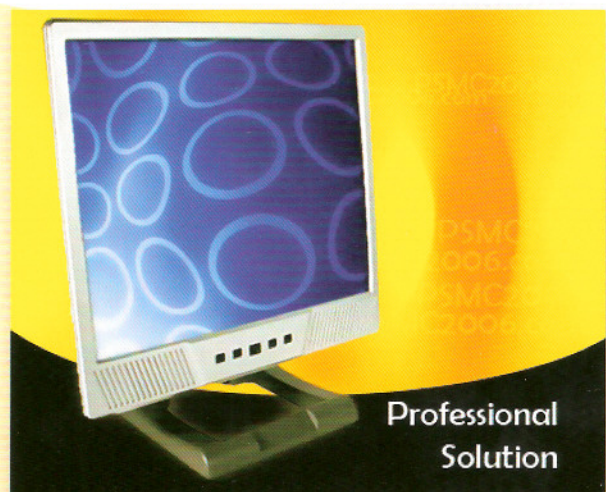


Information Technology

- ▶ BAS (Building Automation System)
- ▶ SCADA (Supervisory Control and Data Acquisition)
- ▶ Automatic Control
- ▶ GPS (Global Positioning System)
- ▶ Logistic Database

The Others

- ▶ Contract Review
- ▶ Website Service
- ▶ Shop Drawing Writing
- ▶ Professional Indemnity Insurance
- ▶ Process Improvement
- ▶ Engineering Training
- ▶ Laboratory & Testing



In areas;

- Low Rise Buildings
- High Rise Buildings
- Schools
- Hospitals
- Recreation Centres
- Modular Buildings
- Industrial
- Road works
- Bridges
- Tunnels
- Dams
- Jetties
- Soil & Foundation
- Sewerage or Water Supply
- Heating, Ventilation, Air Conditioning,
- Hydraulics & Plumbing
- Pipelines
- Petrochemical, Refineries, Fertilizers
- Structures
- Pollution Control Equipment
- Waste Disposal
- Underground Storage
- Acoustic & Noise



PSMC CO., LTD.

[ADDRESS] 1605 TOWN IN TOWN VILLAGE SOI 5, LADPRAO 94 RD.,
WANGTHONGLANG, BANGKOK 10310

[TEL] +66 2 559-2621-2

[FAX] +66 2 559-2049

[WEBSITE] WWW.PSMC2006.COM

[EMAIL] INFO@PSMC2006.COM